



# Dayton Business Park

13501 Balsam Lane  
Dayton, Minnesota



FOR LEASE

- 6,400 total square feet available
- 1,600 square feet built out
- Two offices, two restrooms
- Open work station area
- 4,800 square foot vanilla shell contiguous
- Can be divided into 1,600 square foot suites
- Ideal for destination retail, service or office use
- 2005 Average Household Income \$71,135
- Number of Households - 2,032

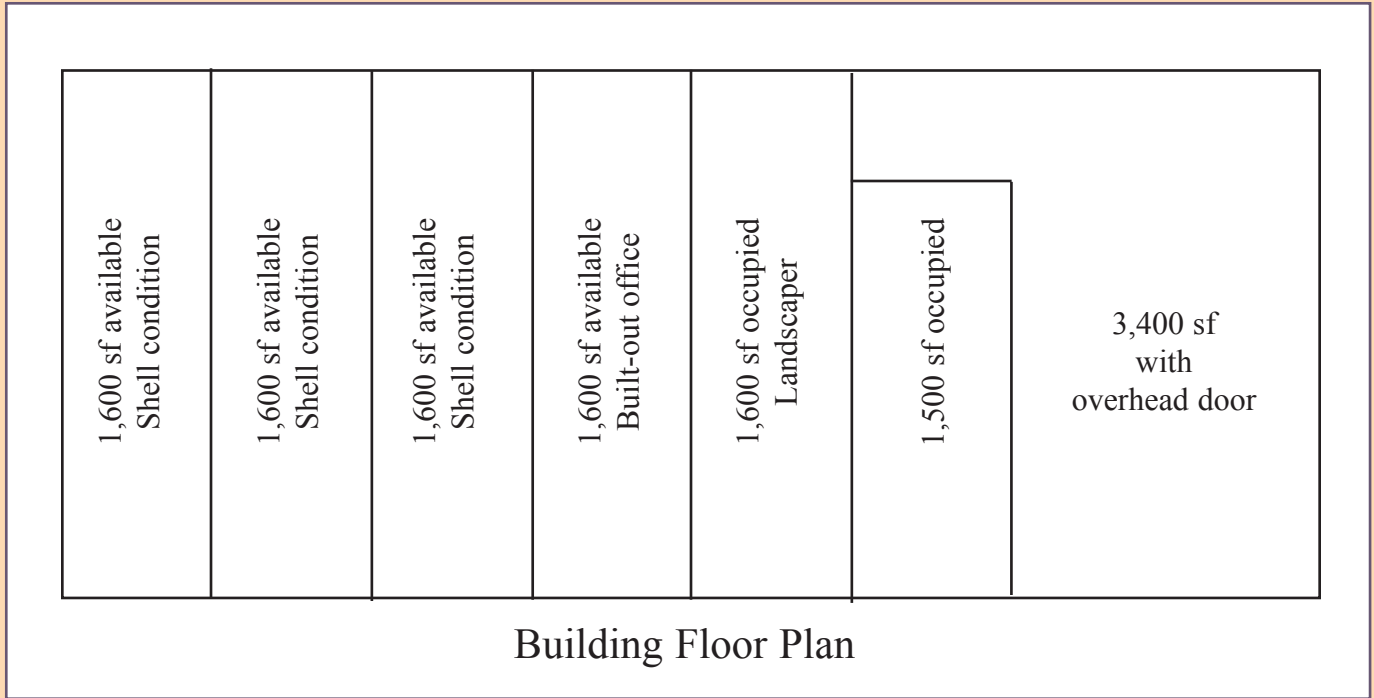
Christianson & Company  
Commercial Real Estate Services LLC

*Lisa Christianson 952-393-1212*  
*Nancy Flicek 952-992-0093*

[www.candcre.com](http://www.candcre.com)

# Dayton Business Park

13501 Balsam Lane  
Dayton, Minnesota



*Lisa Christianson*  
952-393-1212  
lisa@christiansonandco.com

*Nancy Flicek*  
952-992-0093  
nancy@christiansonandco.com

**Christianson & Company**  
Commercial Real Estate Services LLC  
952.393.1212 phone 952.920.2861 fax

[info@candcre.com](mailto:info@candcre.com)  
[www.candcre.com](http://www.candcre.com)

All information is from sources judged to be reliable, however, no warranty or representation is made as to its accuracy or completeness. Property is subject to price change, prior to sale or lease and withdrawal from market without notice.

